



GBS-Series

POWERFUL MODELS IN A FLEXIBLE RANGE OF SIZES



GBS-Series

Heat Exchangers of the GBS-Series are the solid all-rounders among all brazed plate heat exchangers from Kelvion. The latest technology and decades of experience of successful applications guarantee highest quality, cost efficiency and reliability. Equipped with the proven technical features like Safety Chamber™, Delta Injection™ and Full Flow System™ the units are ideal for applications of all sizes with max. 200°C/392°F and up to 40 bar/580 psi.

The product range also offers the widest variety and flexibility in terms of sizes, different connections, flow arrangements and accessories. Thus heat exchangers of the GBS-series always serve the right solution for your operating conditions.

Always a suitable solution at hand

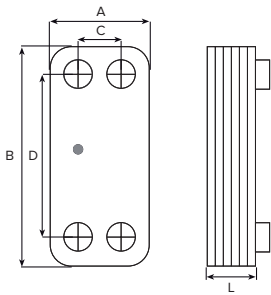
The brazed plate heat exchangers from Kelvion offer tailor-made solutions for the widest range of application. We configure the most economically favorable model for you from the wide range of available sizes and the numerous optional features. We adapt this with individually positioned connections to meet your specific requirements.

Example:

- heating water and industrial water systems
- underfloor heating
- subcoolers and condensers
- economizer
- refrigerant evaporators
- oil coolers

Your advantages at a glance:

- highest flexibility
- compact design
- wide range of applications
- solid construction



We need following information to select your optimum heat exchanger

- required temperature range
- flow rates or required heat load
- maximal permitted pressure drop
- required working conditions

Type	(bar)	Standard dimensions (mm)				(mm)	(kg)	(Litres/Channel)	
Plate heat exchanger	Pressure	A	B	C	D	L-Dimension N = number of plates	Mass N = number of plates	Volume	Max. number of plates
GBS 100M	31	74	204	40	170	8.00+2.23xN	0.70+0.050xN	0.025	50
GBS 200H	31	90	231	43	182	10.00+2.24xN	1.10+0.060xN	0.030	50
GBS 220H	31	90	328	43	279	10.00+2.22xN	1.30+0.080xN	0.046	50
GBS 240H	31	91	464	43	415	10.00+2.20xN	2.04+0.140xN	0.070	50
GBS 300H	31	124	173	73	120	10.00+2.22xN	1.20+0.060xN	0.030	50
GBS 400H	31	124	335	73	281	9.50+2.24xN	1.60+0.130xN	0.065	100
GBS 418L/M	40	127	282	84	239	9.00+2.05xN	1.35+0.118xN	0.055	50
GBS 420L	31	127	282	68	223	9.00+2.76xN	1.35+0.118xN	0.076	150
GBS 500H	31	124	532	73	478	9.50+2.23xN	1.76+0.210xN	0.100	100
GBS 525L/M/H	36/34	118	525	69	476	9.00+2.58xN	2.55+0.210xN	0.125	100
GBS 700L/M	31	271	532	200	460	11.00+2.25xN	9.60+0.540xN	0.230	150
GBS 757L/M/H	35	281	543	198	460	11.50+2.65xN	13.20+0.500xN	0.310	160
GBS 760L	27/20	257	519	138	416	13.50+3.45xN	12.60+0.400xN	0.410	150
GBS 800H	31	271	532	161	421	11.50+2.34xN	10.00+0.540xN	0.221	260
GBS 900H	31	271	802	161	690	11.30+2.31xN	11.50+0.800xN	0.399	260
GBS 910M	36/32	318	783	225	690	14.00+2.54xN	20.00+0.853xN	0.480	200
GBS 1000M/H	31	386	875	237	723	20.30+2.31xN	39.50+1.250xN	0.600	360
GBS 1000L	31/16	386	875	237	723	22.65+2.35xN	39.50+1.250xN	0.466/0.733	360
Also available as an advanced evaporator with a special „Delta Injection™“ distribution system for the refrigerant inlet.									
GBS 400H-AE	31	124	335	73	281	9.50+2.24xN	1.60+0.130xN	0.065	100
GBS 500H-AE	31	124	532	73	478	9.50+2.23xN	1.76+0.210xN	0.100	100
GBS 700M-AE	31	271	532	200	460	11.00+2.25xN	9.60+0.540xN	0.230	150
GBS 800H-AE	31	271	532	161	421	11.50+2.34xN	10.00+0.540xN	0.221	260
GBS 900H-AE	31	271	802	161	690	11.30+2.31xN	11.50+0.800xN	0.399	260
GBS 1000H-AE	31	386	875	237	723	20.30+2.31xN	39.50+1.250xN	0.600	360

GBS-Series: Specifications

- plate material: Stainless steel AISI 316L / 1.4404
- brazing material: Copper

Features

- Safety Chamber™ (model 700, 757, 800, 900, 1000)
- Delta Injection™ (model 400, 500, 700M, 800, 900, 1000H)
- Full Flow System™ (model 100, 200, 220, 240, 300, 400, 500)

Performance limits

- working temperature: -196°C to +200°C / -321°F to +392°F
- working pressure: up to 40 bar / 580psi

Approval

- PED (CE), ASME VIII-1, UL

The specifications contained in this brochure are intended only to serve the non-binding description of our products and services and are not subject to guarantee. Binding specifications, especially pertaining to performance data and suitability for specific operating purposes, are dependent upon the individual circumstances at the operation location and can, therefore, only be made in terms of precise requests.

Kelvion Brazed PHE GmbH
 Remsaer Straße 2a, 04603 Nobitz-Wilchwitz, Germany
 Phone +49 34 47 55 39-0
 Fax +49 34 47 55 39-30
 sales.nobitz@kelvion.com
 www.kelvion.com

Kelvion PHE GmbH
 Karl-Schiller-Straße 1-3, 31157 Sarstedt, Germany
 Phone +49 50 66 601-0
 Fax +49 50 66 601-134
 sarstedt@kelvion.com

