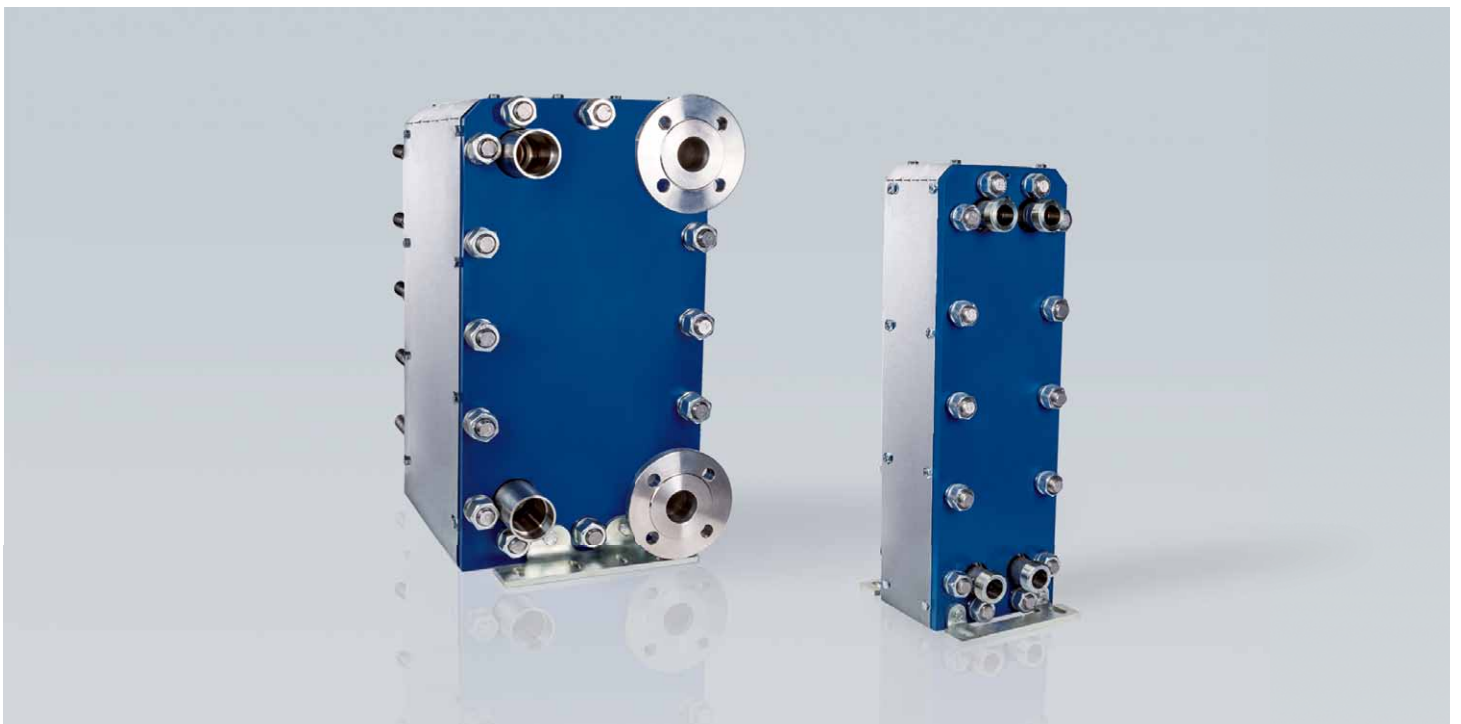


GBH-HP-Series

HIGH PRESSURE BRAZED PLATE HEAT EXCHANGERS



GBH-HP-Series

For the highest mechanical and thermal requirements.

The GBH-HP-Series are brazed plate heat exchangers with a pressure frame. They are designed for transcritical and subcritical CO₂ systems and industrial applications with system pressures up to 140 bar.

Examples

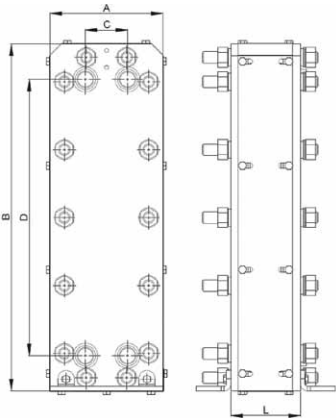
- CO₂ heat pumps
- CO₂ supermarket cooling
- oil cooling
- industrial heating and cooling
- power plant technology

Always a suitable solution at hand

The brazed plate heat exchangers from Kelvion offer tailor-made solutions for the widest range of application. We configure the most economically favorable model for you from the wide range of available sizes and the numerous optional features. We adapt this with individually positioned connections to meet your specific requirements.

Your advantages at a glance:

- high permanent pressure resistance
- long lifetime
- low investment costs
- solid frame construction
- CO₂ in a transcritical area



We need following information to select the optimum heat exchanger

- required temperature range
- flow rates or required heat load
- maximal permitted pressure drop
- required working conditions

Type	(bar)	Standard dimensions (mm)				(mm)	(kg)	(Litre/Chanel)	
Plate heat exchanger	Pressure	A	B	C	D	L-Dimension N = number of plates	Mass N = number of plates	Volume	Max. number of plates
GBH-HP 500H	140/140	195	600	73	478	L=72,5+2,28xN	W=78,0+0,21xN	0,100	120
GBH-HP-DW 500H	140/140	195	600	73	478	L=75+2,40xN	W=77,8+0,27xN	0,100	100
GBH-HP 700L	140/130	340	621	200	460	L=114+2,34xN	W=179,0+0,54xN	0,230	150
GBH-HP 700M	140/140	340	621	200	460	L=114+2,35xN	W=179,0+0,54xN	0,230	150
GBH-HP 1000H	130/130	500	1050	237	723	L=163,3+2,31xN	W=652,0+1,25xN	0,600	360
Also available as an advanced evaporator with a special "Delta Injection™" distribution system for the refrigerant inlet.									
GBH-HP 500H-AE	140/140	195	600	73	478	L=72,5+2,28xN	W=78,0+0,21xN	0,100	120
GBH-HP 700M-AE	140/130	340	621	200	460	L=114+2,35xN	W=179,0+0,54xN	0,230	150
GBH-HP 1000H-AE	130/130	500	1050	237	723	L=163,3+2,31xN	W=652,0+1,25xN	0,600	360

GBH-HP-Series: Specifications

- plate material: Stainless steel 1.4401 / 1.4404
- brazing material: Copper

Features

- Safety Chamber™ (model 700, 1000)
- Delta Injection™ (model 500, 700, 1000)
- Full-Flow System™ (model 500)
- Double-Wall-Safety-heat exchanger (type GBH-HP-DW 500 H)

Performance limits

- working temperature: -40°C to +150°C
- working pressure: up to 140 bar

Approval

- PED (CE)



The specifications contained in this brochure are intended only to serve the non-binding description of our products and services and are not subject to guarantee. Binding specifications, especially pertaining to performance data and suitability for specific operating purposes, are dependent upon the individual circumstances at the operation location and can, therefore, only be made in terms of precise requests.

Kelvion Brazed PHE GmbH
 Remsaer Straße 2a, 04603 Nobitz-Wilchwitz, Deutschland
 Tel. +49 34 47 55 39-0
 Fax +49 34 47 55 39-30
 sales.nobitz@kelvion.com
 www.kelvion.com

Kelvion PHE GmbH
 Karl-Schiller-Straße 1-3, 31157 Sarstedt, Deutschland
 Tel. +49 50 66 601-0
 Fax +49 50 66 601-134
 sarstedt@kelvion.com