

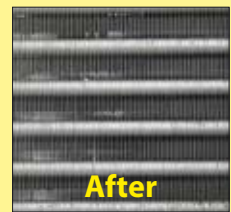
ScalePro™

Scale remover for adiabatically cooled condensers

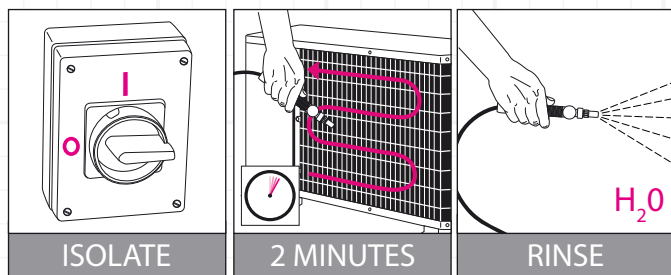
Limescale is often a serious problem on ill-protected, badly fitted or heavily-used adiabatic condensers. Constant water-cooling quickly deposits a thick mineral coating on metal surfaces, restricting airflow and insulating heat-exchange fins. This buildup causes soaring head pressures as the condenser struggles to dissipate heat, eventually leading to system failure. ScalePro is a super-fast descaler for condensers affected by this issue.

Specification

Name	ScalePro
Product Code	010147
Packing Quantity	4 x 5 litres
Packing Size (L x H x D) cm	40 x 30 x 27
Shipping Weight (Kg)	22.84
Shipping Volume (m3)	0.0324
Application	Condenser descaler
Soils	Scale
Dilution (water:product)	N/A
Contact Period	2 Minutes
Rinse/Flush Required	YES - 15 minutes, repeat if required
Special Features	Ready to use



Directions for use



NOTE: ScalePro is an industrial-strength descaler and therefore acts very quickly. Be sure to understand the inherent risks of using an acid-based chemical on metal surfaces, and rinse thoroughly after using. If you are still unsure, please contact Advanced Engineering for application advice.

Isolate electrics on the system. For user safety, avoid using ScalePro in windy conditions.

Using a low pressure sprayer, spray onto the affected area – starting at the bottom in one corner and progressing methodically up and across. ScalePro will bubble on contact with the mineral deposits.

The maximum contact time for this product is 2 minutes. The coil should then be rinsed thoroughly for 15 minutes until all ScalePro is removed.

If any limescale remains, repeat the whole process as necessary.

Xi

ScalePro™
Irritant
UN 1789

Contains Hydrochloric Acid

R36/37/38 Irritating to eyes, respiratory system and skin. S1/2 Keep locked up and out of the reach of children. S23 Do not breathe spray. S38 In case of insufficient ventilation, wear suitable respiratory equipment. S26 In case of contact with eyes, rinse immediately with plenty of water and seek medical advice. S36/37/39 Wear Suitable protective clothing, gloves and eye/face protection. S45 In case of accident or if you feel unwell, seek medical advice immediately (show the label where possible).

Consult Safety Data Sheet for full safety information. Always wear suitable PPE.

Advanced Engineering Ltd
Guardian House, Stroudley Road
Basingstoke, Hants, RG24 8NL. UK
Tel: +44(0)1256 460300
sales@advancedengineering.co.uk
www.advancedengineering.co.uk

This product should only be used by trained operatives. The "directions for use" are recommendations only; correct use will depend upon circumstances. To the extent permitted, no liability can be accepted for loss resulting from its use. Advanced Engineering follows a policy of continual product improvement. For this reason, some materials and specifications could change without notice.